

NOVECENTO

PETRACER'S
ICONIC ITALIAN LUXURY

NOVECENTO

Rifacendosi alla grande architettura italiana degli anni Quaranta, improntata al razionalismo, Novecento rispecchia un paese che dopo la seconda guerra mondiale si risveglia come da un lungo sonno. Collezione della rinascita, dunque, forte e fragile al contempo, che unisce rigore e voglia di spensieratezza: evidente nei pattern ripetitivi e lineari il primo, timida ma determinata la seconda, ispirata al paravento e alla sua leggerezza. La resa effetto marmo dà vita a un prodotto intenso e profondo, da guardare o travedere come da dietro un paravento, oggetto che in sé concilia un contrasto: quello tra la rigida separazione degli spazi che esso impone e la leggerezza dei materiali costruttivi e la frivolezza del suo utilizzo.



Drawing inspiration from great Italian architecture of the 1940s which embraced rationalism, Novecento reflects a country which reawakened after the Second World War, as though from a long slumber. A collection of rebirth, strong yet fragile, combining rigour with a desire for light-heartedness, the former palpable in the repetitive and linear patterns, whereas the latter, timid yet determined, draws inspiration from the screen and its lightness. The marble-effect rendition brings to life an intense and profound product, for beholding, or glimpsing at, as though from behind a screen, an object which inherently reconciles a contrast: the rigid separation of spaces it imposes juxtaposed with the lightness of construction materials and the frivolity of its use.



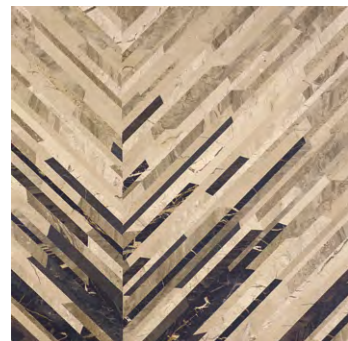






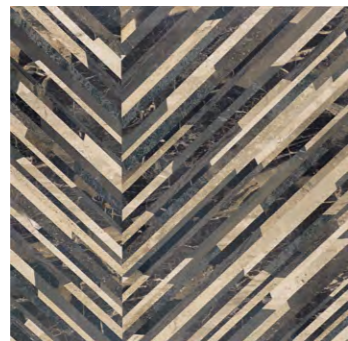


Meriggio
Naturale



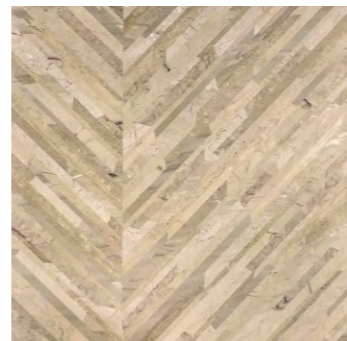
012

Crepuscolo
Naturale



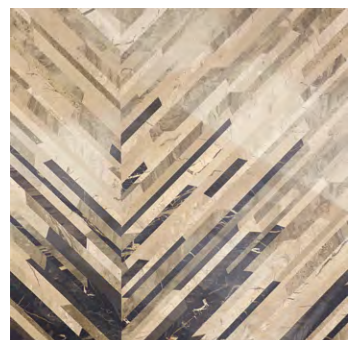
012

Alba
Naturale



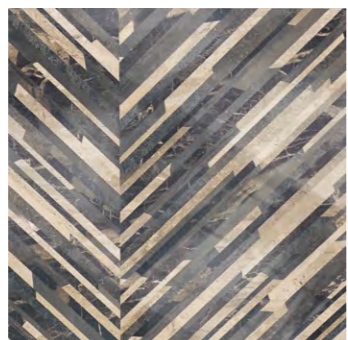
012

Meriggio
Lappato



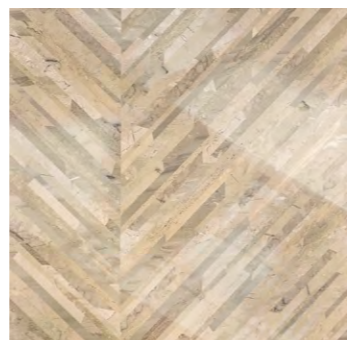
047

Crepuscolo
Lappato



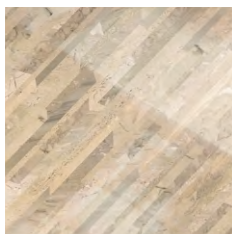
047

Alba
Lappato



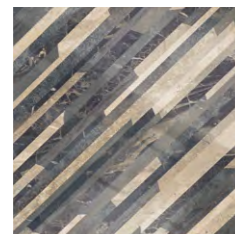
047

Alba
Lappato



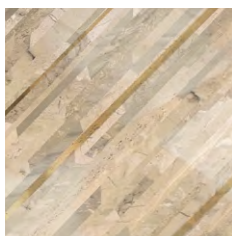
017

Crepuscolo
Lappato



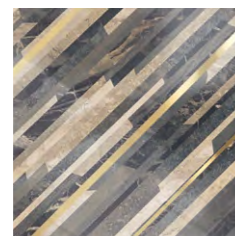
017

Alba Oro
Lappato



222

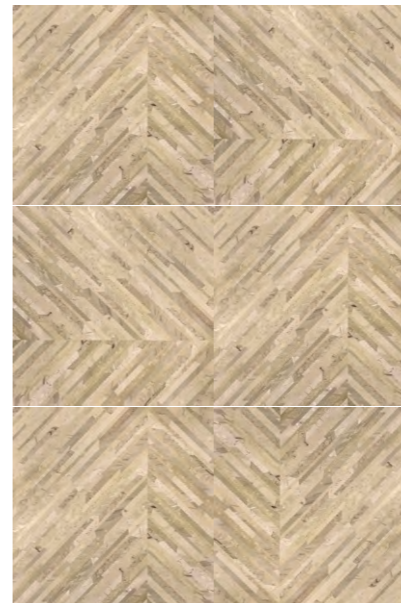
Crepuscolo Oro
Lappato



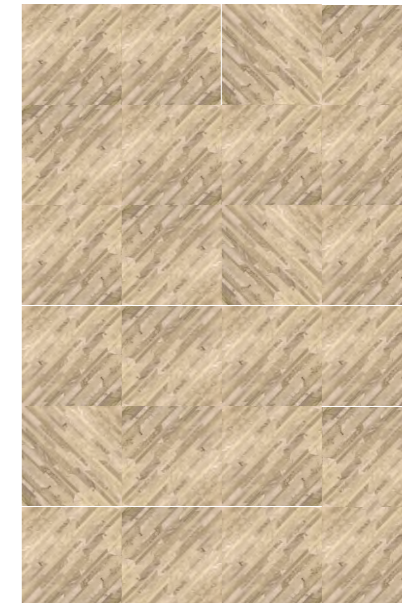
222



Alba
Esempio di posa 60x60



Alba
Esempio di posa 20x20



Meriggio
Esempio di posa 60x60



Meriggio
Esempio di posa 60x60



Crepuscolo
Esempio di posa 60x60












Crepuscolo
Esempio di posa 20x20



NOVECENTO

CARATTERISTICHE TECNICHE TECHNICAL CHARACTERISTICS

GRUPPO DI APPARTENENZA GROUP	EN 14411	BLA GL
Proprietà fisico chimiche <i>Physical-chemical properties</i>	Metodo applicato <i>Applied method</i>	Valore <i>Value</i>
 Percentuale di assorbimento <i>water absorption</i>	ISO 10545/3	< 0,5%
 Resistenza alla flessione <i>Flexural resistance</i>	ISO 10545/4	35N/mm ²
 Resistenza al cavillo <i>Crazing resistance</i>	ISO 10545/11	Garantita <i>Guaranteed</i>
 Resistenza all'abrasione <i>Abrasion resistance</i>	ISO 10545/7	PEI 3
 Resistenza agli sbalzi termici <i>Thermal shock resistance</i>	ISO 10545/9	Resistente <i>Resistant</i>
 Resistenza all'attacco chimico <i>Resistance against chemicals</i>	ISO 10545/13	Conforme <i>Compliant</i>
 Resistenza alle macchie <i>Stain resistance</i>	ISO 10545/14	CLASSE 5 <i>CLASS 5</i>
 Coefficiente d'attrito <i>Static coefficient of friction</i>	DIN 51130 DIN 51097 DCOF	R9 A A+B ≥ 0,92
 Resistenza al gelo/disgelo <i>Thaw cycle resistance</i>	ISO 10545/12	Resistente <i>Resistant</i>

PESI ED IMBALLI - WEIGHT AND PACKAGING

Tipologia prodotto <i>Product Type</i>	Formato (cm) nominale <i>Nominal size (cm)</i>	n°pezzi/scatola <i>Pcs/box</i>	mq/scatola <i>Sqm/box</i>	Kg/scatola <i>Kg/box</i>	Scatole/pallet (80x120 cm) <i>Boxes on pallet (80x120 cm)</i>	mq/pallet (80x120 cm) <i>Sqm on pallet (80x120 cm)</i>	Kg/pallet (80x120 cm) <i>Kg on pallet (80x120 cm)</i>	Spessore <i>Thickness</i> mm
Alba Nat.	60x60	3	1,08	23	36	38,88	898	10
Meriggio Nat.	60x60	3	1,08	23	36	38,88	898	10
Crepuscolo Nat.	60x60	3	1,08	23	36	38,88	898	10
Alba Lap.	60x60	3	1,08	23	36	38,88	898	10
Meriggio Lap.	60x60	3	1,08	23	36	38,88	898	10
Crepuscolo Lap.	60x60	3	1,08	23	36	38,88	898	10
Alba Lap.	20x20	13	0,52	12	60	31,2	720	10
Crepuscolo Lap.	20x20	13	0,52	12	60	31,2	720	10
Alba Oro Lap.	20x20	13	0,52	12	60	31,2	720	10
Crepuscolo Oro Lap.	20x20	13	0,52	12	60	31,2	720	10





PETRACER'S
ICONIC ITALIAN LUXURY

PETRACER'S Ceramics S.r.l.

Via Radici in Piano 9/11 41042

Fiorano Modenese (MO) Italy

Ph. + 39 0536 812163

petracer.it  [petracers_official](https://www.instagram.com/petracers_official)